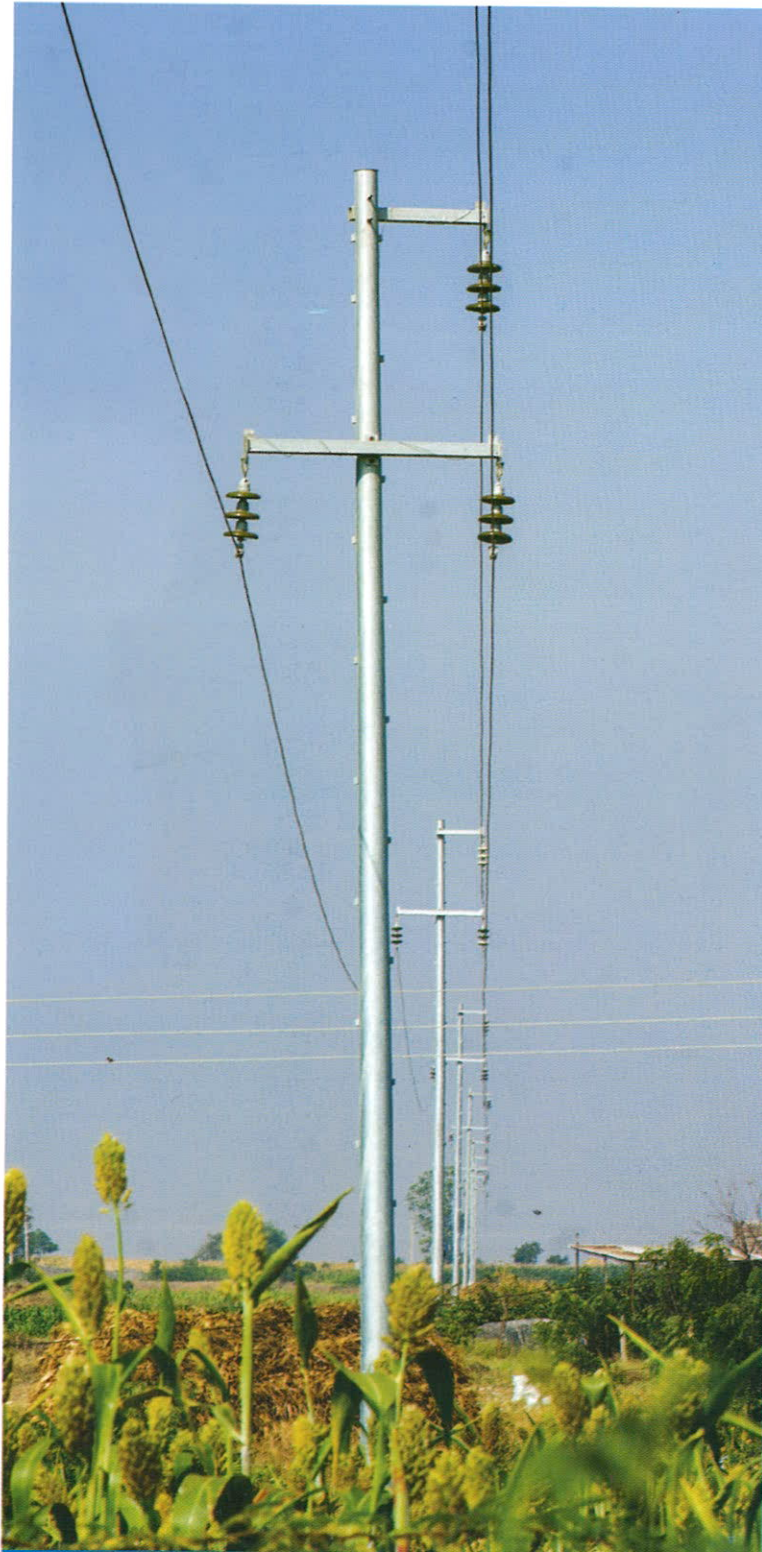


valmont 
INDIA



Distribution Poles

Valmont is recognized throughout the world as an industry leader in engineered support structures and irrigation equipment. With more than 65 years of experience and more than 100 manufacturing facilities worldwide Valmont has knowledge, expertise and resources to provide the highest quality products and services to the industry on time.

Monopoles for power distribution

Steel poles are the dominant type & new age structures for transmission & distribution of power and are commonly used in many countries & being adopted in more new markets. Valmont combines engineering expertise, high quality manufacturing practices & facilities along with customized designs. Valmont has unique business experience worldwide and a pioneer in India in these structures. Monopole being the suitable and effective solution for the power transmission, sub-transmission & distribution are more efficiently adopted in India.

Efficient & Durable options for Power Distribution

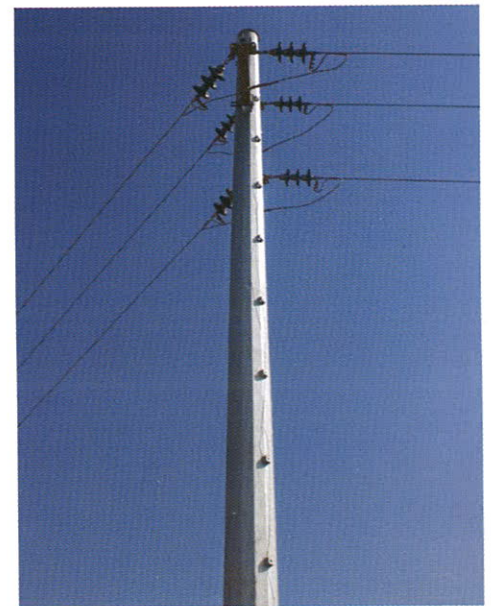
Valmont knows that your power distribution structure needs may not be as easy as specifying one pole for the entire project. Terrain, environment, wind speed, soil conditions are the important factors which influence while determining the structure that best fits the need. Look for the complete product line & expertise to engineer, manufacture and deliver the right pole to the right place at the right time.

You can rely on our distribution poles, which offers your system...

- Consistent Strength
- Low Lifetime Costs
- Lower Maintenance Costs
- Coating & Color Options
- Foundation Options
- Custom Designed
- Self-sustaining

These poles can be effectively used for...

- Sub-transmission & Distribution lines
- Multiple Circuit Lines
- Distribution Transformer Centers
- Distribution Capacitor Bank Stations
- Lines with A B Cable
- Road Crossings & Railway Line Crossings



Advantages of Steel Monopoles

Valmont's monopoles for distribution can be designed for single circuit as well as multi circuit lines with different orientations. Suitable extensions always provide easiness in dealing with the undulations in the route of the line.

- Steel monopoles are more flexible than lattice towers, concrete or other steel structures under heavy loads.
- In broken conductor case, bigger deflection of the steel pole reduces tension in intact span and induces smaller bending moment at base.
- Strength of the steel pole section is high compared with traditional poles due to hollow type and round/polygonal shape of the structure.
- Reliable performance and long service life with zero maintenance.

Manufacturing & Structural features

- Pole shafts are fabricated from low-silicon, high strength steel specification from ASTM A572-50/65.
- Anchor bolt and other connection bolt material complies with IS 1367.
- All poles are hot-dipped galvanized after fabrication per ASTM A-123.
- Maximum section of the pole can be manufactured in our plant is 16m long. However, these section lengths are decided based on geographical location where these poles are to be shipped and installed.
- Slip joints are designed with a minimum of 1.5 times the inside outer tube diameter of the section at the splice.
- Distribution poles are designed to suite embedment type foundation with bearing plate at the bottom of the pole. No additional Anchor bolts/foundation/reinforcement is required.
- Distribution poles can also be designed / manufactured with base plate suitable for raft/Pier or other foundation types as per custom design requirement. Anchor Bolts and Templates are provided accordingly.