

Precision Irrigation for Your Fields



## VRI: What's in it for you?

Valley® Variable Rate Irrigation (VRI) allows you to customize your water application based on field topography data, soil maps, crop healthy yield data and other field-specific information.

### This means you can:

- Increase yields by bringing precision irrigation to all areas of your field
- Reduce over-watering, under-watering and runoff.
- Increase efficiency of water and chemical application.
- Relax. You know your precious water resources are being used wisely!

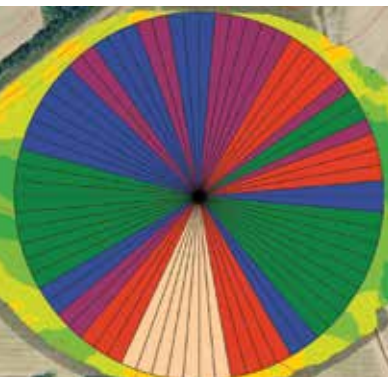
## It's Easy to Use

- AgSense® and BaseStation3™, smart irrigation solutions from Valley provide remote upload capabilities to get the VRI prescription to your center pivot.
- Because you can remotely upload your prescription, you can quickly make changes as your water application needs change in the field.



## VRI Can Save Water

- Based on your VRI prescription, you apply water only where it needs to be.
- By adjusting application depth throughout your field, runoff and deep percolation can be minimized, which protects your soil's health.



### Valley VRI Speed Control

Valley VRI Speed Control is available for those who are interested in basic VRI control and want to receive the benefits of applying water more efficiently. VRI Speed control is included on all Valley ICON® panels, so VRI capabilities are at your fingertips.

#### How Does Valley VRI Speed Control Work?

- Your field is divided into a maximum of 180 sectors with optimized water application throughout.
- A customized VRI prescription speeds up or slows down the center pivot to achieve the desired application depth across each sector.



### Valley VRI Zone Control

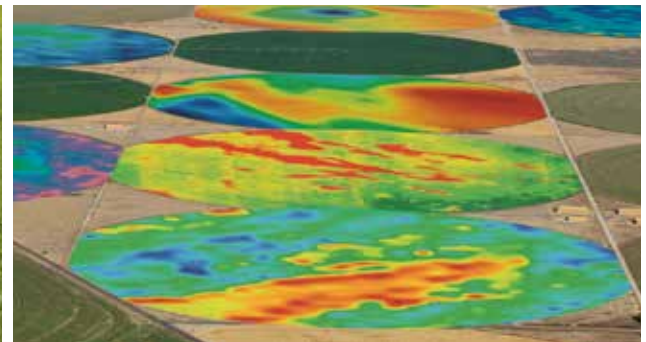
Valley VRI Zone Control allows you to maximize your water application efficiency in more challenging fields, such as those with varying topography.

#### VRI Zone Control

- Your field can be divided into sectors with optimized water application in every single zone.
- A customized VRI prescription pulses the sprinkler control valves along the center pivot zones to achieve the desired application depth.
- It can also be used for on/off control over areas in your field that don't need to be irrigated.

#### VRI Zone Control for Linears

- This option is ideal for rectangular fields with different soil types and non-irrigated areas.
- Research institutions often use this option in test fields.



### Valley VRI Individual Sprinklers (VRI-iS)

- Your field is divided into sectors every 0.1 degree
- A customized VRI prescription changes application rates or turns off individual sprinklers over non-irrigated areas
- Each sprinkler is assigned a flow rate