

# SUNSCREEN LOUVRES



Victoria Gardens, Richmond, Vic, **SS203/80** non-trafficable louvre set within aluminium RHS and channel support frame.

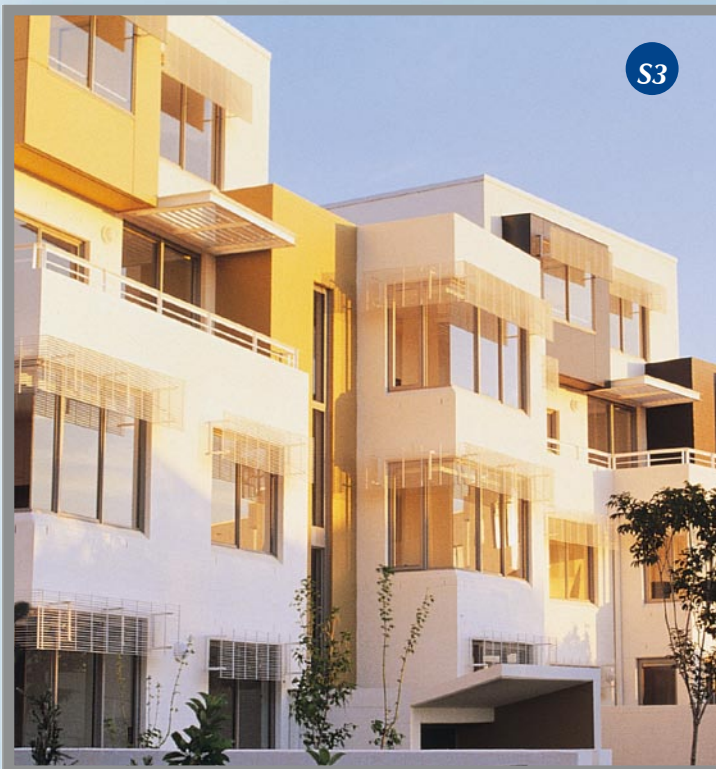


U.T.S. Faculty of Architecture, Ultimo, NSW **SS203/43** louvre set in SHS hinged framing to bay windows. **SS203/60**-louvres on the second floor.

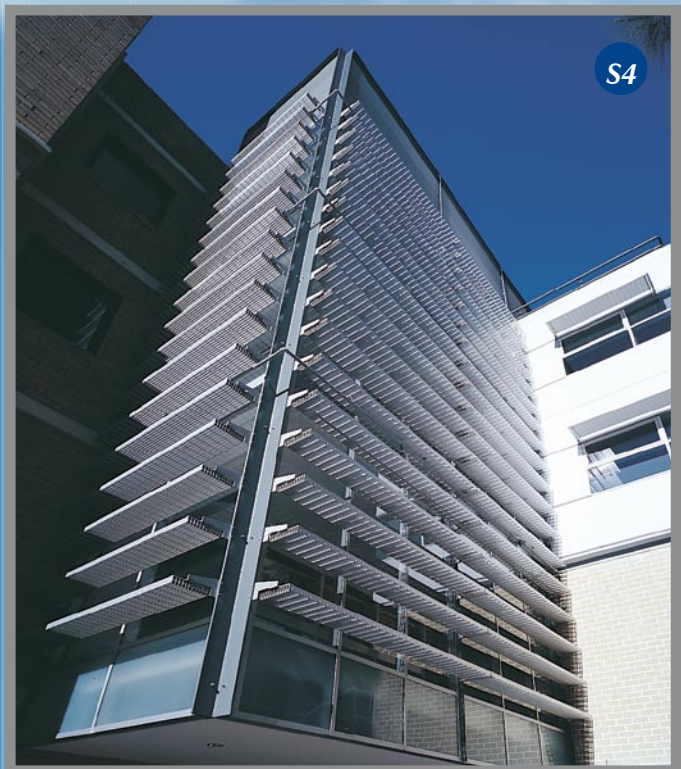


**Hi-Light**  
INDUSTRIES PTY LTD

# SUNSCREEN GRATINGS



Newington NSW, **HA453/SP** grating attached to 'C'-shaped aluminium angle framing in horizontal and vertical configuration over windows.



Australian Graduate School of Management, Kensington, NSW, **HA505** grating creates a grating blade tiered wall attached to aluminium tapered "I" section brackets connected to structural window framing.