

SUSPENDED SUNSCREENS



S9

Cordellia, South Brisbane, Qld, ELL241 ellipsoid grating suspended and tensioned with stainless cable hangers.



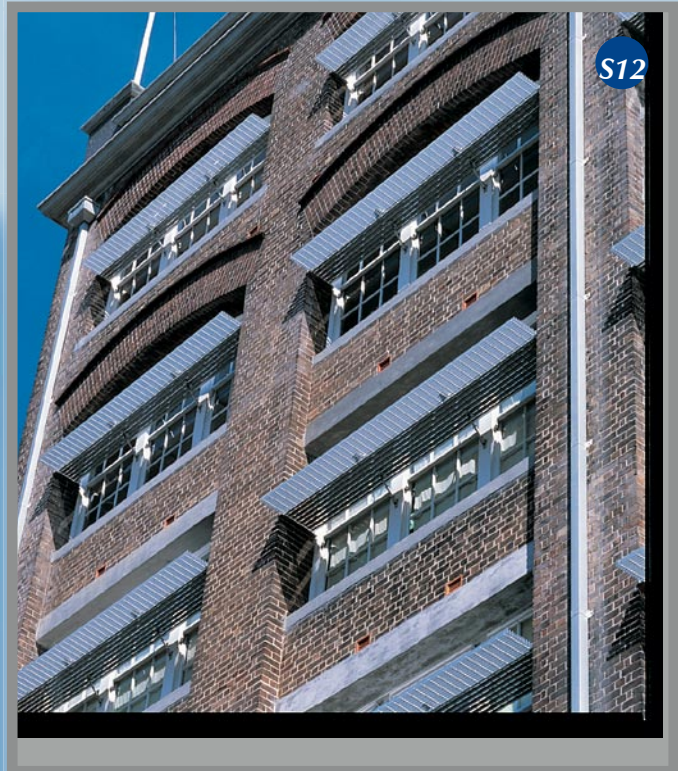
S10

Bowral Library, Bowral, NSW, HA503 grating with RHS nosing, suspended and tensioned with stainless rod hangers and attached to structural window framing.



S11

Prince of Wales Hospital, Randwick, NSW, SS203/60 louvre with RHS and CHS support framing, suspended from cast-in ferrules inside the GFRC façade.



S12

SUNSCREEN LIGHT SHELF

Silknit House, Surry Hills, NSW, SS323/60/100° louvre, **HA503** grating light-shelf suspended with clevis and tube support framing.