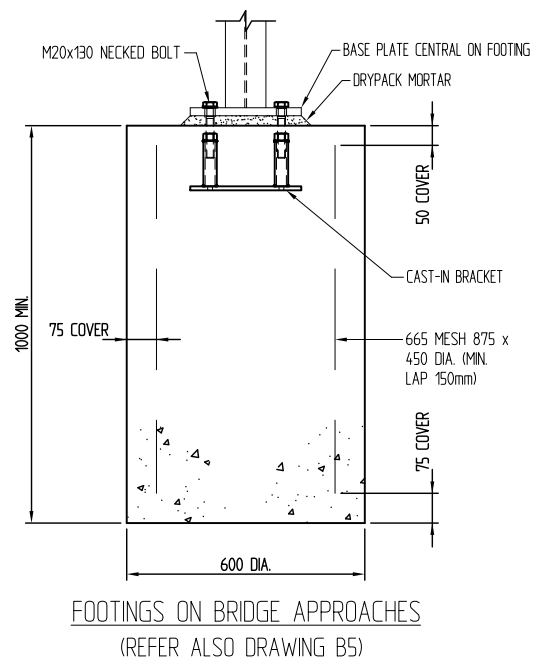
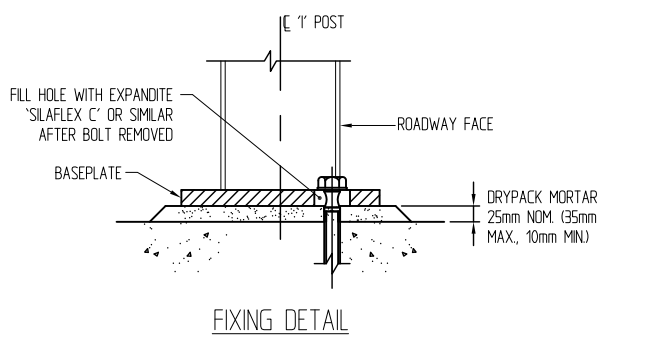
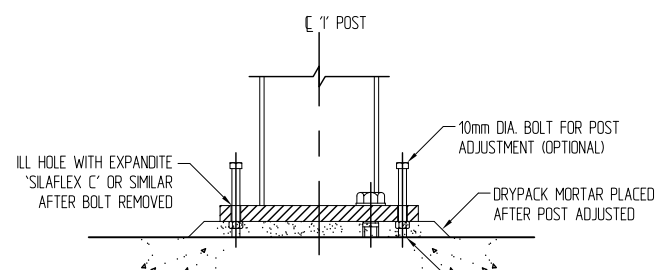
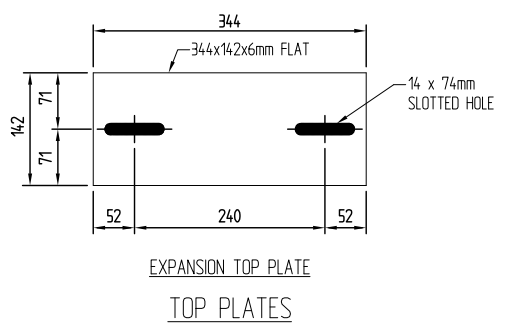
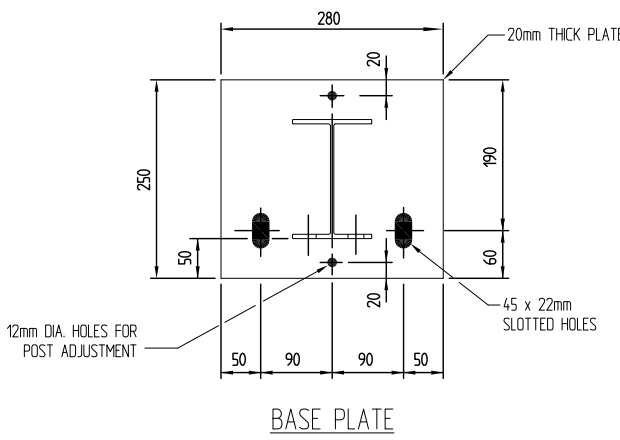


NOTE: TOP RAILS SHALL BE FABRICATED FROM UNGALVANISED PURLIN SECTION OR APPROVED EQUIVALENT AND GALVANISED AFTER FABRICATION. (SEE NOTE 1)

ALL BOLT HOLES ARE 18mm DIA. AND ON LONGITUDINAL CENTER LINE.



- NOTES:**
- ALL STEELWORK TO BE HOT DIP GALVANISED AFTER FABRICATION TO AS/NZS 4680 AND STRAIGHTENED AFTER GALVANISING IF REQUIRED.
 - ALL STEELWORK EXCEPT THRIEBEAM RAIL AND RHS TO BE GRADE S275 TO NZS 3415 OR GRADE 250 TO AS/NZS 3678 OR EQUIVALENT.
 - TO ALLOW FOR BRIDGE MOVEMENT, NUTS OF M16 THRIEBEAM RAIL/POST FIXING BOLTS TO BE TIGHTENED FINGER TIGHT THEN LOCKED WITH LOCKNUT.
 - THRIEBEAM POSTS SHALL BE PLACED VERTICALLY IN THE TRANSVERSE BRIDGE DIRECTION AND NORMAL TO THE GRADE IN THE LONGITUDINAL BRIDGE DIRECTION.
 - ALL THRIEBEAM PANELS USED WILL BE 12 GAUGE.
 - IN THE CASE OF A CURVED BRIDGE THE UNDERHANG OF THE TOP RAIL MAY REQUIRE CUTTING AT THE ENDS OF THE RAIL TO ENABLE THE RAIL TO FIT THE RHS POST. CUTTING SHALL BE CARRIED OUT BEFORE GALVANISING.
 - ALL EXPOSED SHARP EDGES AND CORNERS TO BE SLIGHTLY ROUNDED BY GRINDING BEFORE GALVANISING.
 - ALL WELDING TO BE IN ACCORDANCE WITH AS/NZS 1554.1
 - DRYPACK MORTAR TO BE IN ACCORDANCE WITH NZS 3109.
 - USE OF 10mm DIA BOLTS FOR POST ADJUSTMENT IS OPTIONAL.
 - IF THE GAP BETWEEN BASE PLATE AND DECK SURFACE IS MORE THAN 35mm, A STEEL SHIM PLATE SHALL BE ADDED BELOW THE BASEPLATE, SO THAT THE MORTAR THICKNESS IS WITHIN THE LIMITS SHOWN.

The appropriate layout arrangements shall be redrawn for each project. This drawing shall not be used in contract documents.

Barrier Performance Level 4

No.	Revision	Date	Approved	Date
5	W-section guardrail bolt fixing description modified.	07/08/13	J Chisnall	08/13
4	Standard Post details been deleted.	23/05/13	Endorsed	Date
3	Post under middle of sloping rail deleted.	11/04/13	F Tate	08/13
2	Handrail dimension modified	5/04/13		
0	Re-draft for M23 Appendix B	17/04/12		



Series Non-Proprietary Bridge Barrier Systems

Title Thriebeam Assembly and Fixing Details (With Top Rail)

Ref./Number

B4

Rev. 6