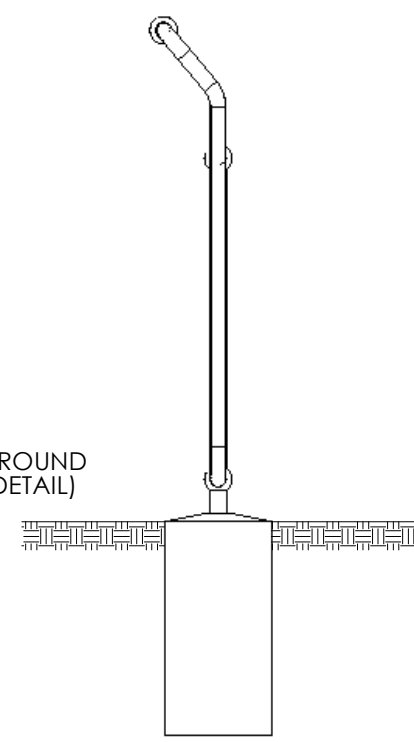
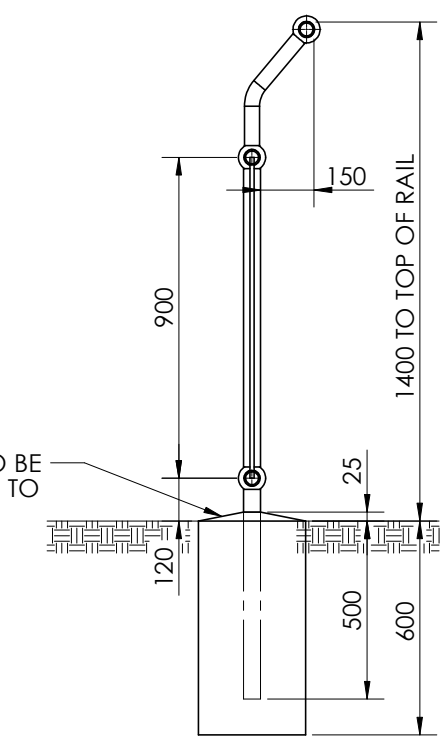


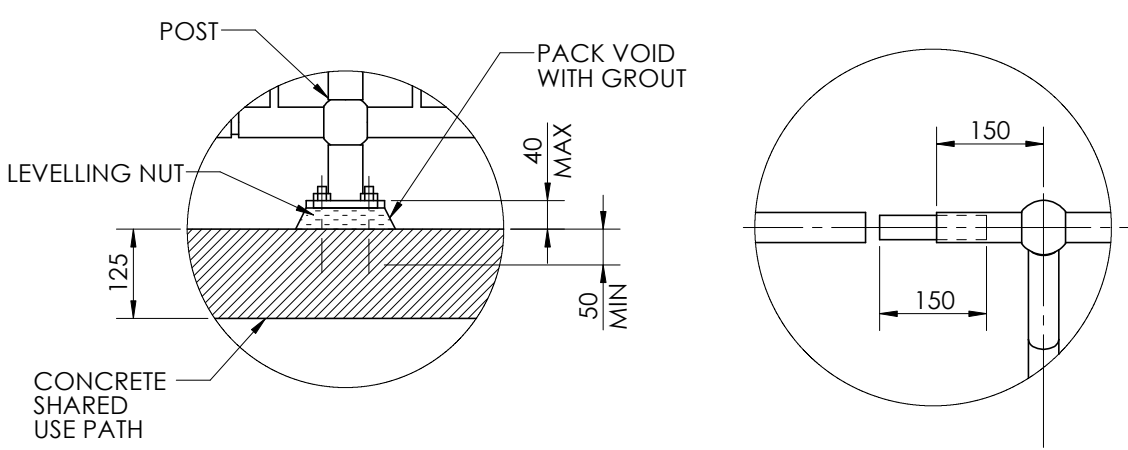
ELEVATION VIEW



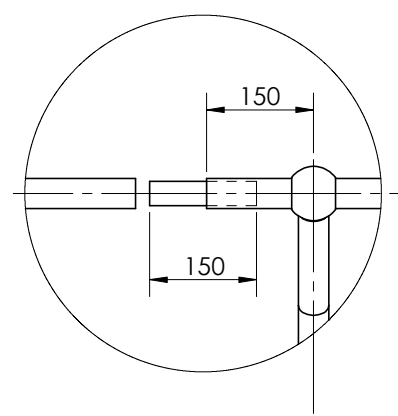
END VIEW



SECTION 'A'-A'



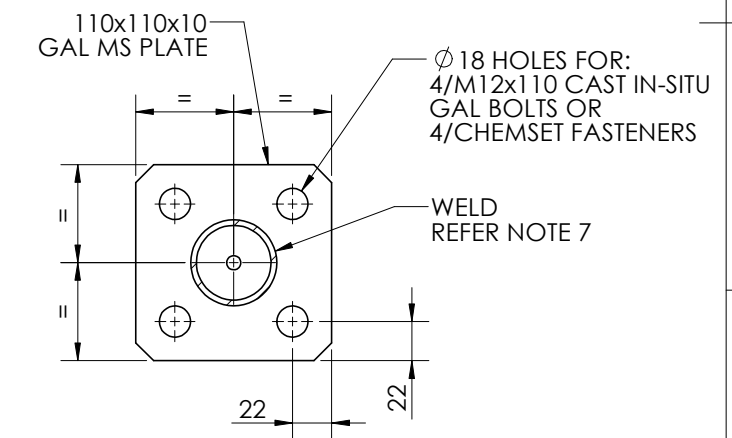
DETAIL 1



**DETAIL 2
SLIP JOINT
SHOWN AS SEPARATED**



NOTES:

1. BASE PLATE FOOTING DETAIL TO BE USED ONLY ON CONCRETE WHERE REQUIRED. ALL OTHER POST FOOTINGS TO BE AS PER POST IN GROUND DETAIL.
2. PROTECTION TREATMENT AND PAINT SYSTEMS TO BE IN ACCORDANCE WITH CLIENT REQUIREMENTS.
3. POSTS TO BE 40NB (48.3 OD, 3.2 THICK) GALVANISED STEEL TUBE.
4. RAILS TO BE: TOP RAIL- 32NB (42.4 OD, 3.2 THICK), MIDDLE RAIL- 32NB (42.4 OD, 3.2 THICK), BOTTOM RAIL- 25NB (33.7 OD, 3.2 THICK) GALVANISED STEEL TUBE.
5. ALL HORIZONTAL RAILS TO BE ROLLED TO MATCH SHAPE OF PATH IF RADIUS IS LESS THAN 20m.
6. MINIMUM LENGTH OF RAILS TO BE 2 SPANS LONG TO MINIMISE NEED FOR JOINTS AT EVERY POST.
7. ALL WELDS TO BE 4MM C.F.W. (CONTINUOUS FILLET WELDS) TO AS1554.1.
8. PREFERRED COLD GALVANISING TREATMENT FOR IN-SITU WELDS, CUT ENDS OR OTHER BARE STEEL TO BE IN ACCORDANCE WITH AS4680 CLAUSE 8 REPAIR PROCEDURE.
9. ALL CONCRETE TO BE GRADE N25 OR AS CLIENT SPECIFIED.
10. POSTS INSTALLED IN EXISTING BRIDGE/CULVERT CONCRETE TO BE GROUTED INTO Ø90mm HOLE WITH 1:3 CEMENT MORTAR BY VOLUME AFTER THEY HAVE BEEN CAREFULLY ALIGNED.
11. ANY GALVANISED TUBULAR RAILS TO BE USED ONLY IN SITUATIONS CLEAR OF LONGITUDINAL VEHICLE IMPACT SO AS NOT TO BE A POTENTIAL SPEARING HAZARD TO MOTORISTS.
12. THESE FENCES ARE INTENDED AS A PEDESTRIAN BARRIER AND ARE NOT TO BE USED IN SITUATIONS WHERE MOTOR VEHICLES REQUIRE RESTRAINT.
13. ALL DIMENSIONS IN MILLIMETRES (U.N.O.)



SECTION 'B'-B'

DRAWING DISCLAIMER:
WEBFORGE PROVIDES THE INFORMATION CONTAINED IN THIS DRAWING AS A GUIDE FOR YOUR INFORMATION ONLY. WEBFORGE HAS TAKEN REASONABLE CARE TO ENSURE THE ACCURACY OF THE INFORMATION AT THE TIME OF PRODUCTION. WEBFORGE EXPRESSLY DISCLAIMS ALL LIABILITY WHATSOEVER FOR (INCLUDING ANY DIRECT OR INDIRECT LOSS OR DAMAGE, COSTS OR EXPENCES HOWSOEVER INCURRED BY ANY PERSON) RELIANCE ON THE WHOLE OR ANY PART OF THE INFORMATION CONTAINED IN OR OMITTED FROM THIS DRAWING. WEBFORGE RESERVES THE RIGHT TO MAKE TECHNICAL CHANGES WITHOUT NOTICE.

1	REVISED NOTE	JB	24/03/15
0	ISSUED FOR PUBLICATION	JB	13/03/15
REV	PARTICULARS	INITIALS	DATE
 		CONTACT: 1300 266 666 info@webforge.com.au www.webforge.com.au	
CLIENT: WEBFORGE		REQ'N NO.: N/A	
PRODUCT: MONOWILLS VELOCITY BALUSTRADE CYCLE BARRIER.		DRAWN: J. BLACKER	
DETAIL: GENERAL DETAILS		CHK'D:	
CUST. O/NO.: N/A		DWG NO.:	
DATE: 17/02/15		DO NOT SCALE DRAWING	
WEBFORGE-VEL-002 REV 1			