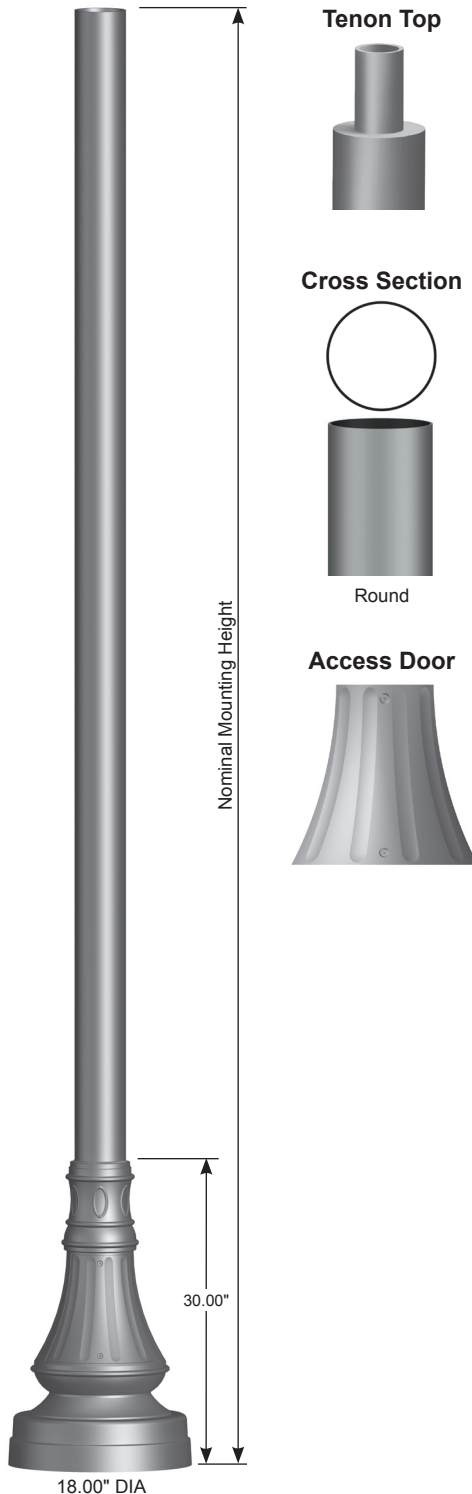


Job Name: _____	Client Name: _____
Job Location - City: _____ State: _____	Created By: _____ Date: _____
Product: BR18ASR -- Quote: _____	Customer Approval: _____ Date: _____

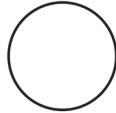
SPECIFICATIONS



Tenon Top

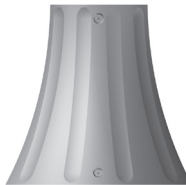


Cross Section



Round

Access Door



Post - The post shaft is either spun or extruded from 6000 series alloy aluminum.

Post Top - A post top plate and tenon can be provided for top mount luminaire and/or bracket. A removable finial is provided for posts receiving drilling patterns for side-mount luminaire arm assemblies.

Structural Base - The structural base is cast from 356 alloy aluminum and provided with a 4.00" wide X 10.00" tall access door. A grounding provision is provided. The post shaft is inserted and welded into the structural base casting. The completed assembly is heat-treated to a T6 temper after the structural welding is completed.

Anchor Bolts - Anchor bolts conform to ASTM F1554 Grade 55 and are provided with two hex nuts, two flat washers and two oversized flat washers. Bolts have an "L" bend on one end and are galvanized a minimum of 12" on the threaded end.

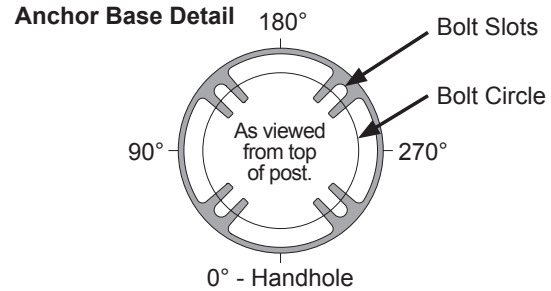
Finish - The standard finish for the post assembly and components is polyester powder applied coating in accordance with Valmont Industries' Specifications. Additional finish options available upon request.

BURNSVILLE Round Tapered Aluminum Post

Job Name: _____	Client Name: _____
Job Location - City: _____ State: _____	Created By: _____ Date: _____
Product: BR18ASR -- Quote: _____	Customer Approval: _____ Date: _____

ANCHORAGE DATA

STRUCTURAL BASE				ANCHOR BOLTS		
BOLT CIRCLE		DIAMETER (IN)	THK (IN)	DIA x LENGTH x HOOK (IN)	PROJECTION (IN)	± (IN)
DIA (IN)	± (IN)					
14.00	0.50	18.00	0.75	0.75 x 17.00 x 3.00	3.50	0.25



LOAD AND DIMENSIONAL DATA

NOMINAL MOUNTING HEIGHT	DESIGN INFORMATION						POST DIMENSIONS					MODEL NUMBER
	80 MPH w/1.3 GUST ¹		90 MPH w/1.3 GUST ¹		100 MPH w/1.3 GUST ¹		BASE OD (IN)	TOP OD (IN)	WALL THK (IN)	STRUCTURE WEIGHT ³ (LBS)		
	MAX LUMINAIRE EPA ² (SQFT)	MAX LUMINAIRE WEIGHT ² (LBS)	MAX LUMINAIRE EPA ² (SQFT)	MAX LUMINAIRE WEIGHT ² (LBS)	MAX LUMINAIRE EPA ² (SQFT)	MAX LUMINAIRE WEIGHT ² (LBS)						
8'-0"	13.6	200	10.6	200	8.5	200	4.00	3.00	0.125	55	080030404TD	
	20.0	300	17.0	300	13.6	300	5.00	3.00	0.125	55	080030504TD	
	20.0	300	17.0	300	13.6	300	5.00	4.00	0.125	57	080040504TD	
10'-0"	10.4	200	8.0	200	6.3	200	4.00	3.00	0.125	57	100030404TD	
	16.9	300	13.1	300	10.5	300	5.00	3.00	0.125	59	100030504TD	
	16.9	300	13.1	300	10.5	300	5.00	4.00	0.125	61	100040504TD	
12'-0"	8.2	150	6.2	150	4.8	150	4.00	3.00	0.125	60	120030404TD	
	13.8	200	10.6	200	8.4	200	5.00	3.00	0.125	62	120030504TD	
	13.8	200	10.6	200	8.4	200	5.00	4.00	0.125	64	120040504TD	
14'-0"	6.3	150	4.7	150	3.5	150	4.00	3.00	0.125	64	140030404TD	
	11.0	200	8.3	200	6.5	200	5.00	3.00	0.125	66	140030504TD	
	11.0	200	8.3	200	6.5	200	5.00	4.00	0.125	69	140040504TD	
16'-0"	4.9	100	3.5	100	2.5	100	4.00	3.00	0.125	67	160030404TD	
	7.8	150	5.8	150	4.4	150	4.00	3.00	0.188	77	160030406TD	
	8.8	150	6.5	150	5.0	150	5.00	3.00	0.125	70	160030504TD	
18'-0"	8.8	150	6.5	150	5.0	150	5.00	4.00	0.125	73	160040504TD	
	6.9	150	5.0	150	3.7	150	5.00	3.00	0.125	73	180030504TD	
	6.9	150	5.0	150	3.7	150	5.00	4.00	0.125	77	180040504TD	

- EPA values are calculated using fastest mile winds.
- Maximum EPA (Effective Projected Area) and weight values are based on top mounted luminaires and/or brackets having a centroid 1'-6" above and 2'-0" eccentric to the post top at Nominal Mounting Height. Variations from sizes above are available upon inquiry at the factory. Satisfactory performance of posts is dependent upon the post being properly attached to a supporting foundation of adequate design.
- Structure Weight is a nominal value which includes the post shaft and structural base.

PRODUCT ORDERING CODES

DESIGN SERIES	CROSS SECTION	MODEL NUMBER	FIXTURE MOUNTING	COLOR	OPTIONS
BR18AS	Round	080030404TD 140030504TD 080030504TD 140040504TD 080040504TD 160030404TD 100030404TD 160030406TD 100030504TD 160030504TD 100040504TD 160040504TD 120030404TD 180030504TD 120030504TD 180040504TD 120040504TD 140030404TD	Drill Mounting D1 = 1 Luminaire D2 = 2 @ 180° D3 = 3 @ 120° D4 = 4 @ 90° D5 = 2 @ 90° D6 = 3 @ 90° Tenon Mounting P2 = 2.38" OD x 4.00" PD = 3.00" OD x 3.00" -- = Plain Top P9 = Other Tenon (Contact Factory)	DWH = White DSS = Sandstone HTG = Hunter Green DNA = Natural Aluminum DCG = Charcoal Gray DMB = Medium Bronze DNB = New Dark Bronze DDB = Dark Bronze DBL = Black DSB = Steel Blue DTG = Dark Green DBR = Red SC = Special Color (Contact Factory)	See Decorative Accessories or Decorative Arms - Aluminum at valmontstructures.com (Please Specify)